



Let's Get Started
Orienteering

Part 4

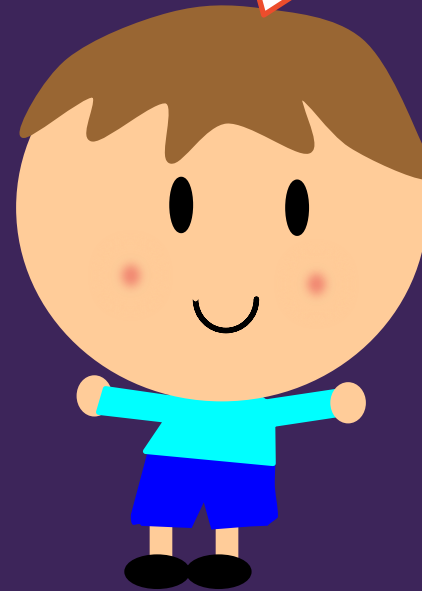
Orienteering Maps



**We have a map
and a course and
know how to set
our maps!**

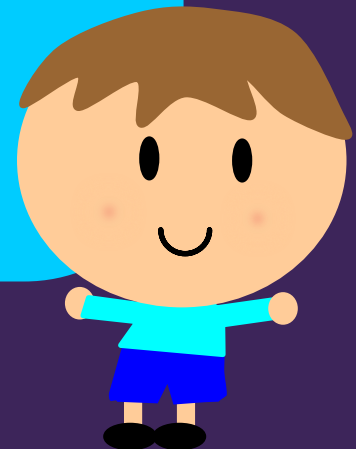


**But can we do some
“real” orienteering
now?**



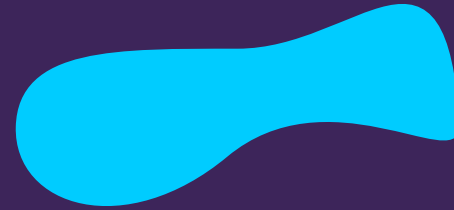
We need to learn about orienteering maps

**What do you
think this colour
is used for?**



Water

Ponds



Rivers



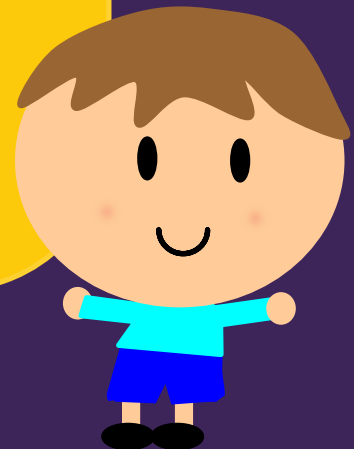
Streams



Marsh



**What do you
think this colour
is used for?**



Open Land

Grass



Fields

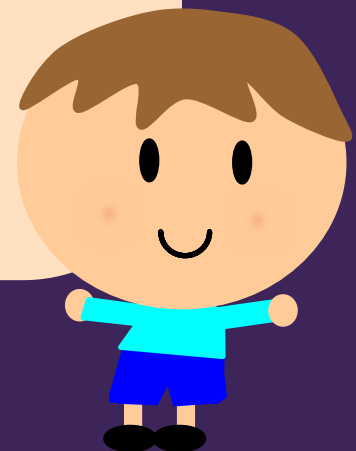


Open Hillside



A paler colour is used for “rough” open land

**What do you
think this colour
is used for?**



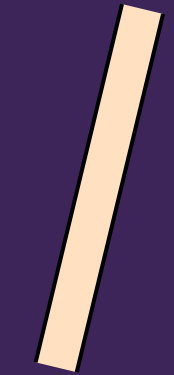
Paved Areas

Roads

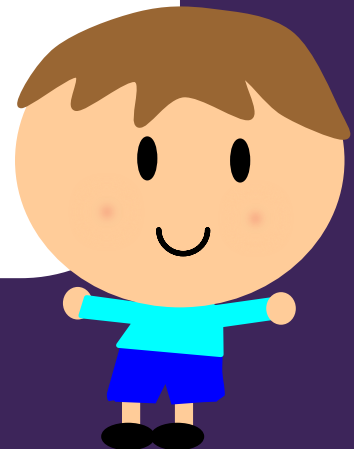
Pavements

Playgrounds

Stairs



**What do you
think this colour
is used for?**

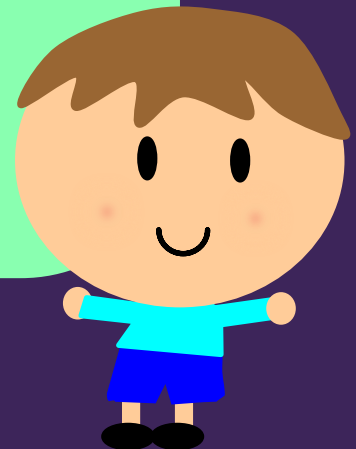


Forest 'Run'



Woodland which it is easy to run through

**What about this
colour?**



Forest 'Walk'

Woodland which you
can walk through but
not run

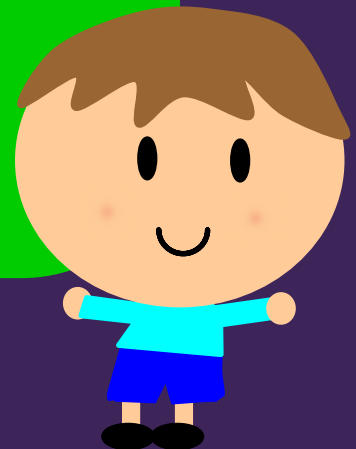
Branches in the way

Trees closer together

Branches on the ground



**What about the
darker green?**



Forest 'Fight'

Dense woodland which is very difficult to get through



Deep, dark woods!

Thicket

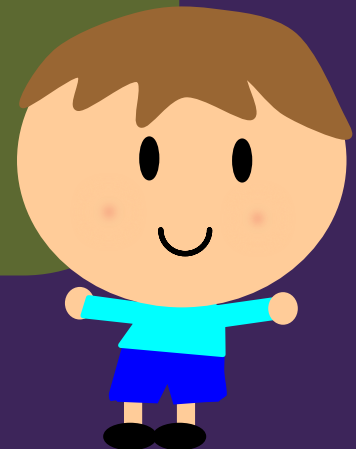
Small area of dense bushes

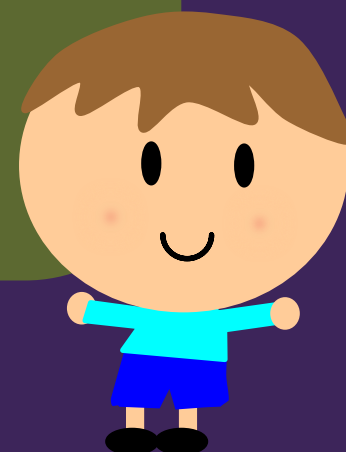


Distinctive Tree

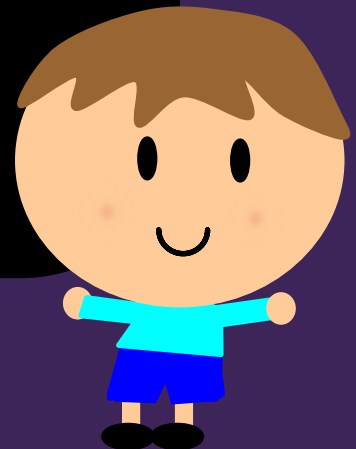


What do you
think this
colour is used
for?





What do you
think this
colour is used
for?



Man Made

Buildings



On urban maps buildings may appear as dark grey rather than black

Black also used for symbols representing man-made objects

Symbols for Man Made Objects



Fence



Symbols for Man Made Objects



High or uncrossable Fence



Symbols for Man Made Objects



Wall



Symbols for Man Made Objects



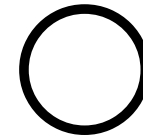
Paths (unpaved)



Thickness of line indicates path size

Symbols for Man Made Objects

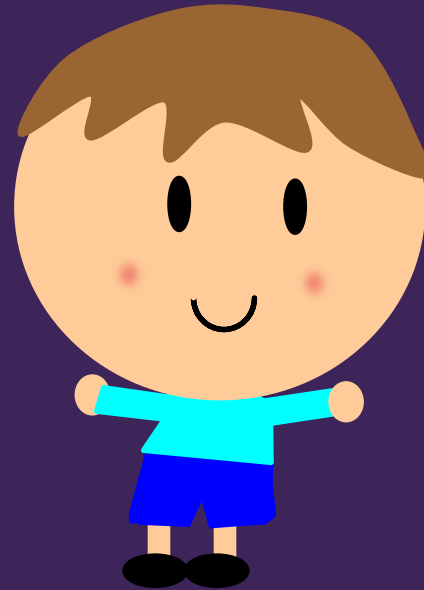
Special Items



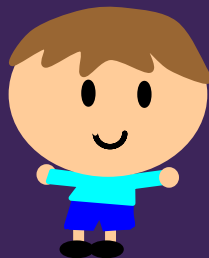
**Let's look at
an example**



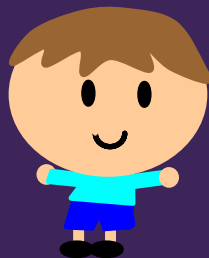
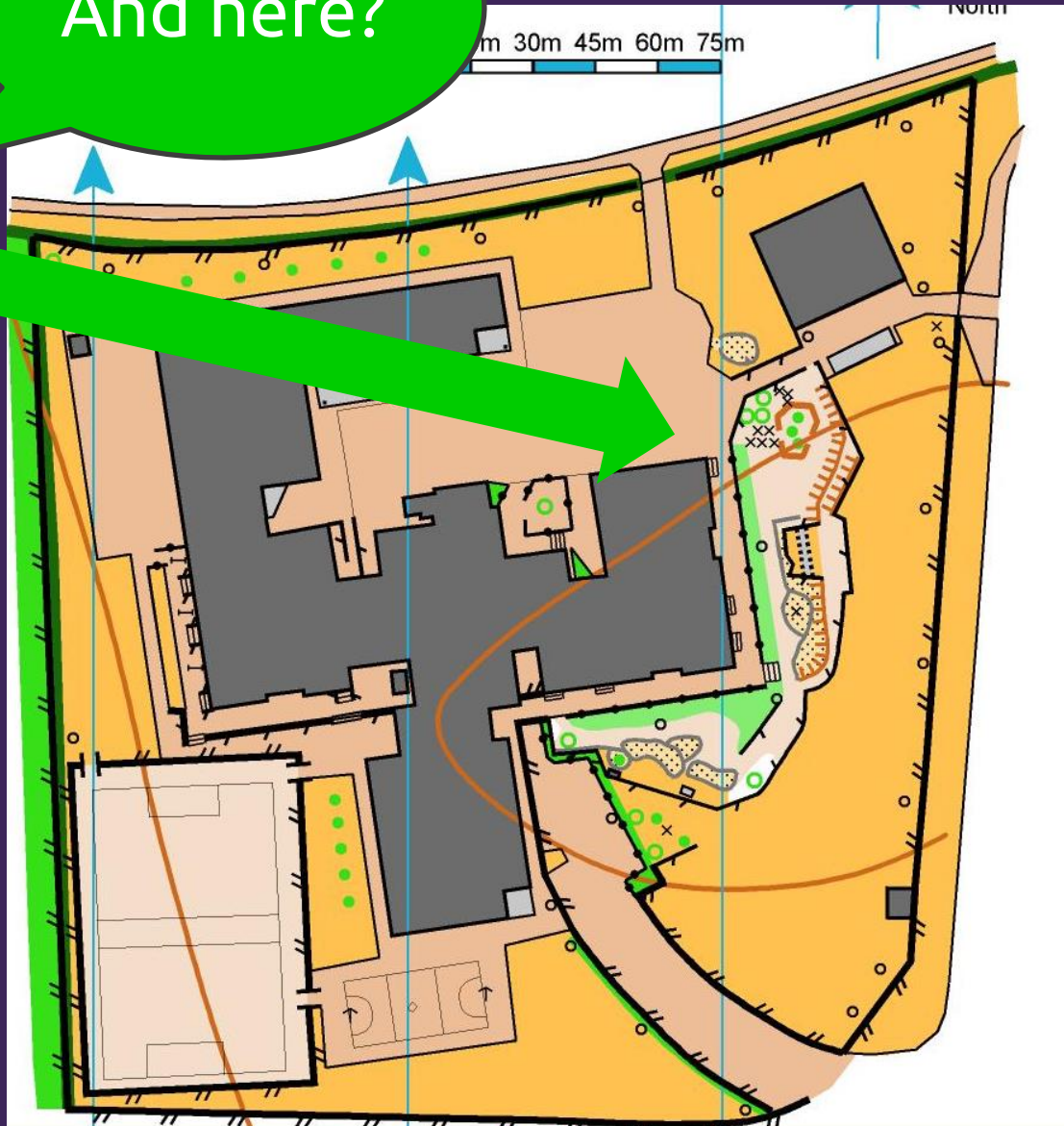
**That seems like a
lot to remember**



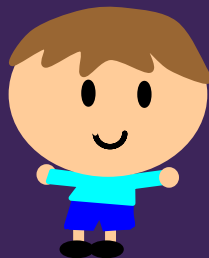
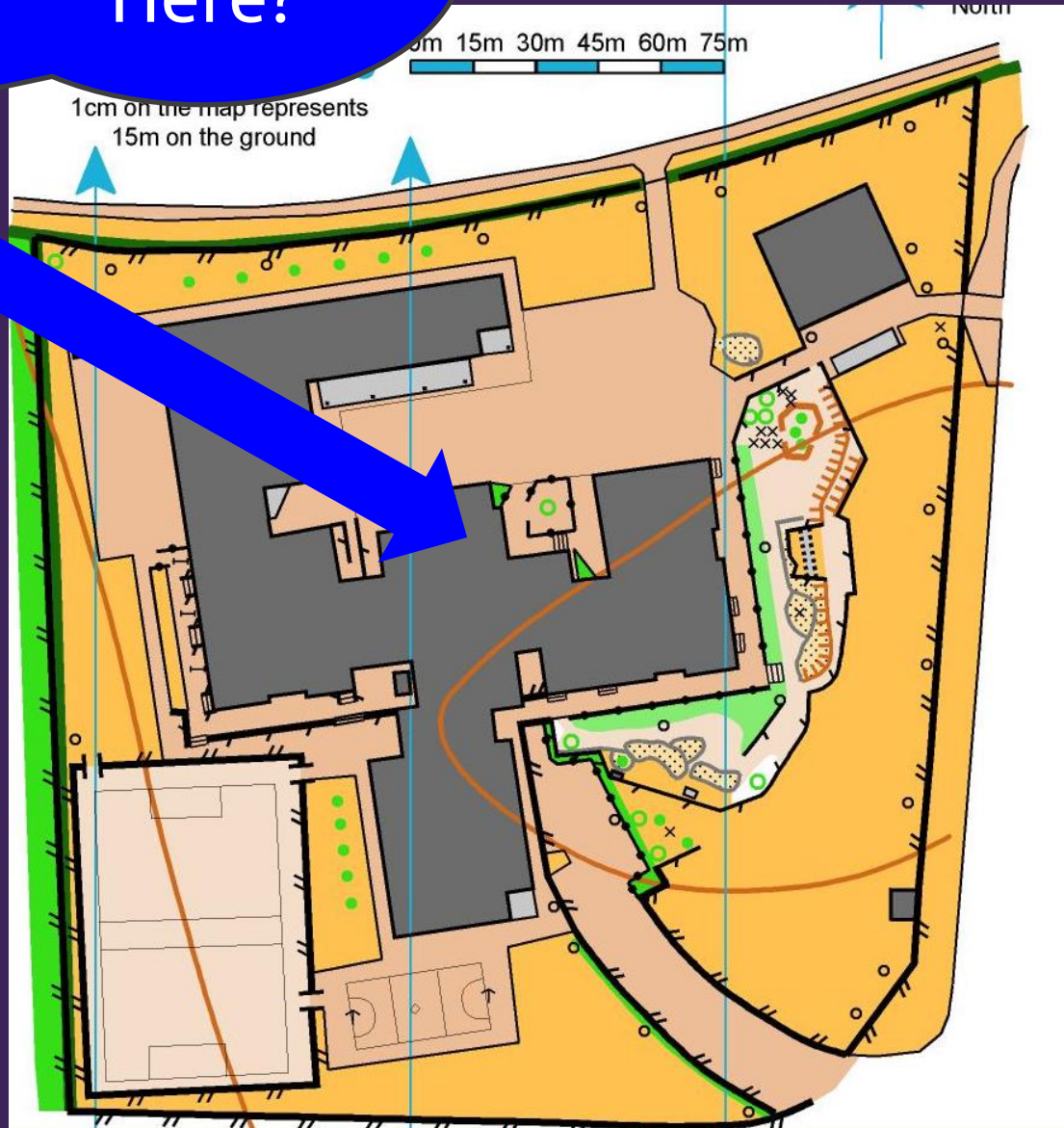
What is
here?



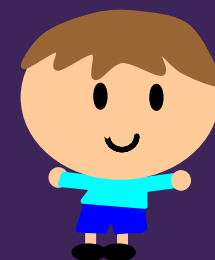
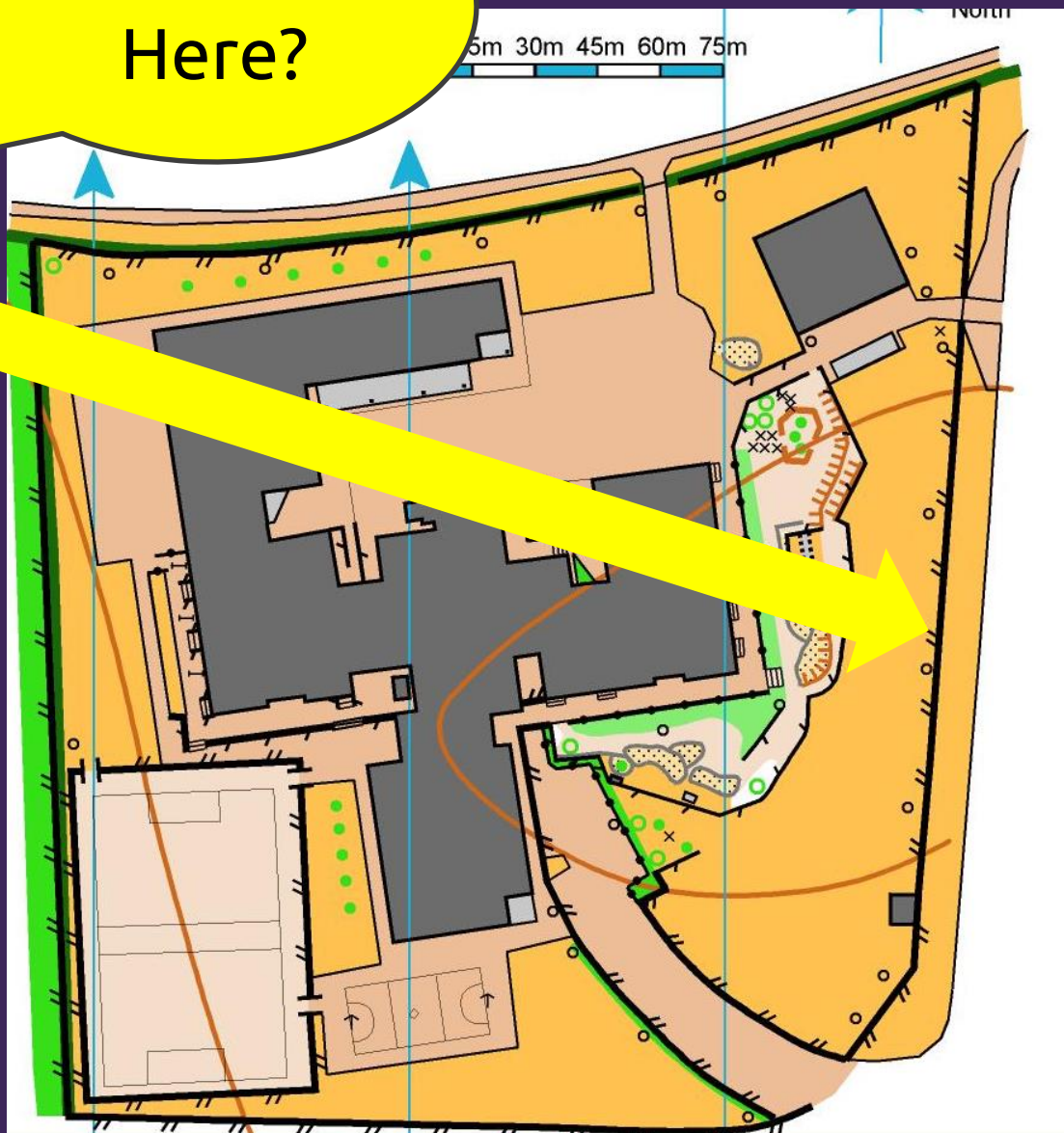
And here?



And
Here?



And
Here?



Contours

The earth isn't flat - but paper is
Need a way to represent hills and slopes

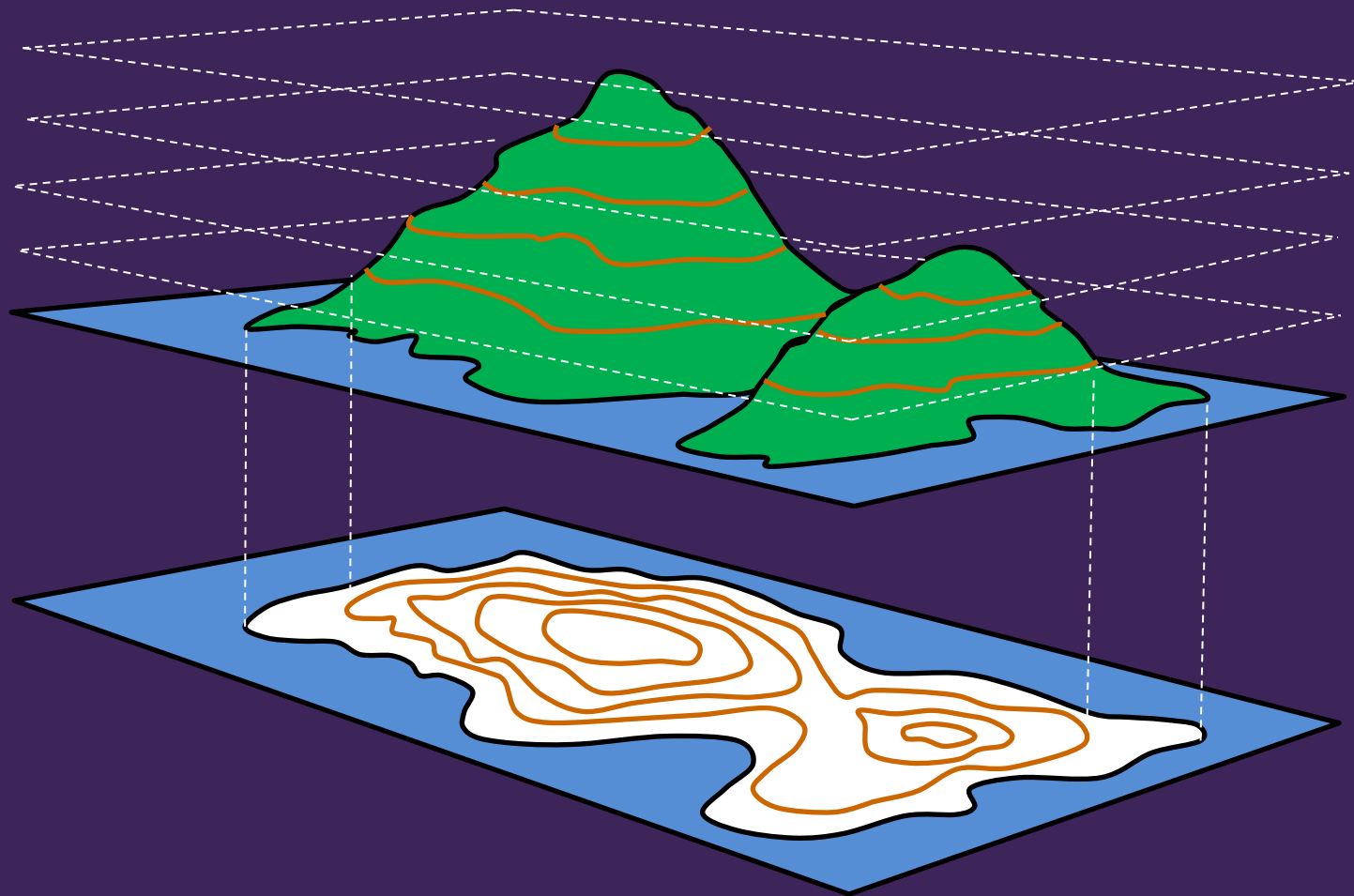
Contour Lines

Brown lines drawn on the map join points of equal
height

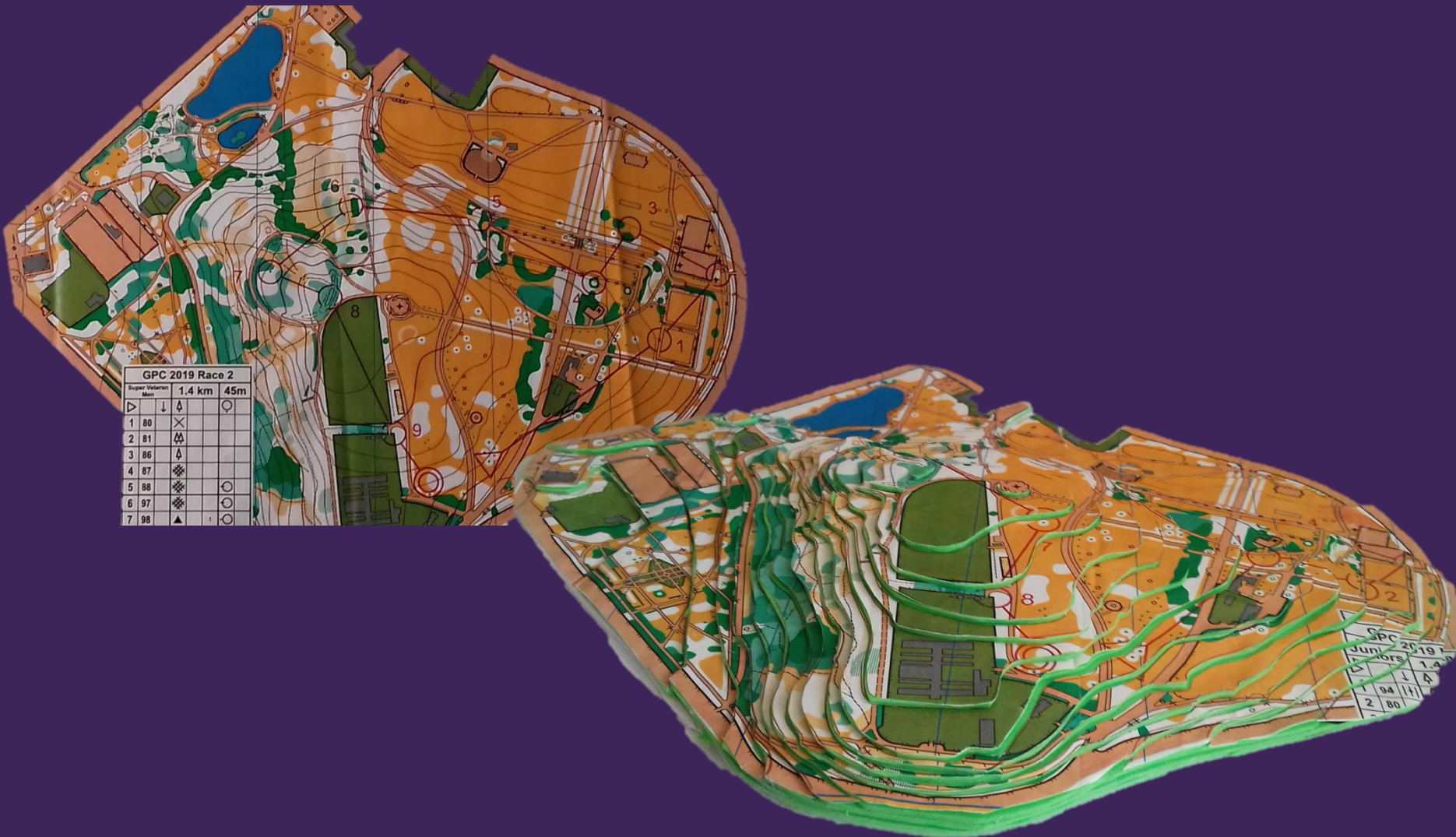
Height between 2 lines is normally 5 metres



Contours

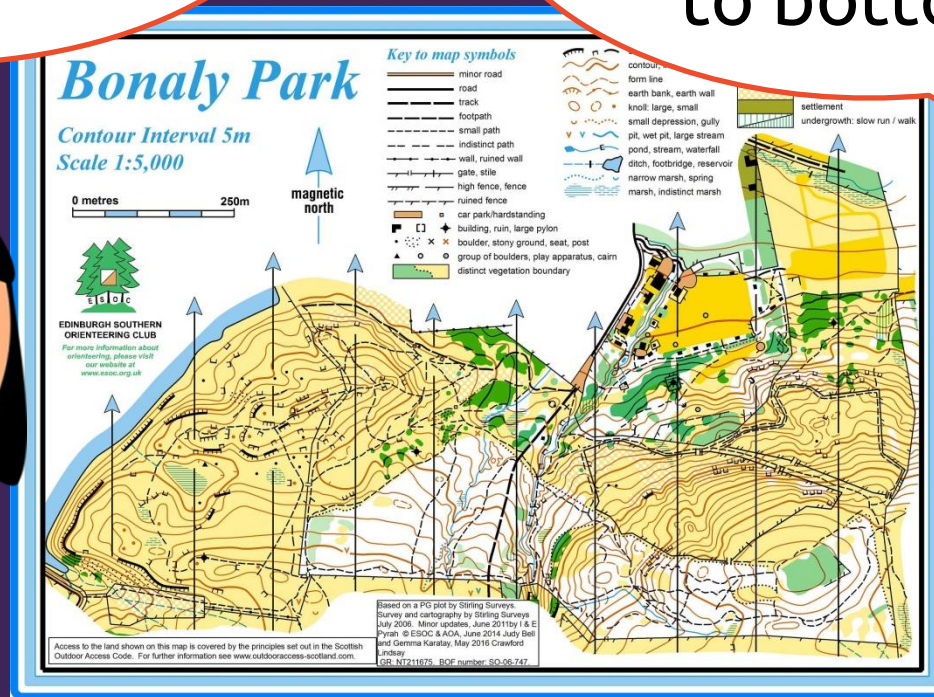


Contour Example



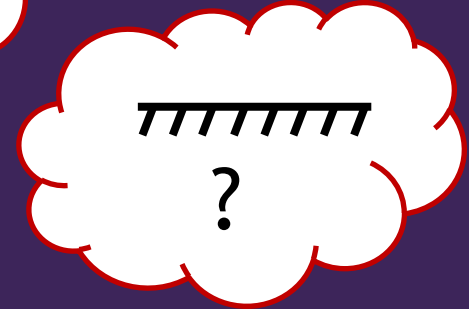
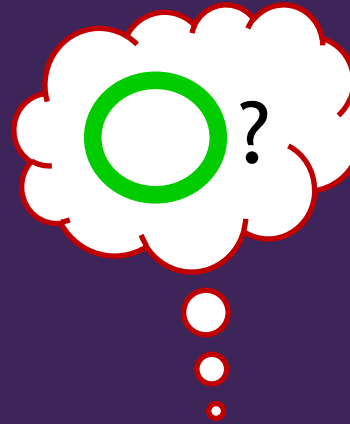
North Lines –
to help you
keep your map
set

Why does my
map have lines
going from top
to bottom?



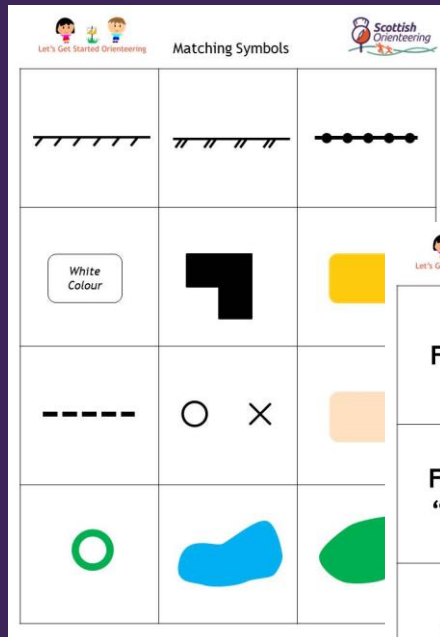
Remember to keep your map set

Lets play a
game to learn
our map
symbols



Symbol Matching Game

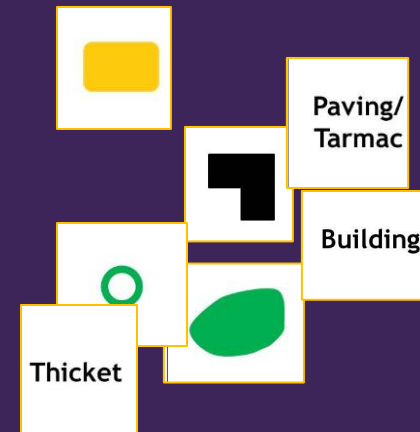
Print out the symbols and words and cut into the squares



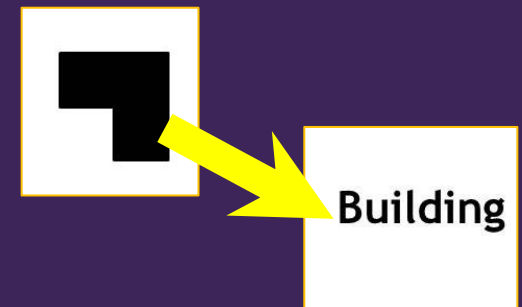
Matching Symbols



Fence	High Fence	Wall
Forest "run"	Building	Open Land
Path	Man-Made Object	Paving/ Tarmac
Single Tree	Pond	Thicket



How quickly can you match them all?



Turn it into a race

Print out more than 1 set

Put all the cards in sets at one side of the room or garden

Go to the other side and on "GO" run up and collect 1 card and bring it back

Keep repeating until you have collected them all

Winner is the 1st person to have them all matched

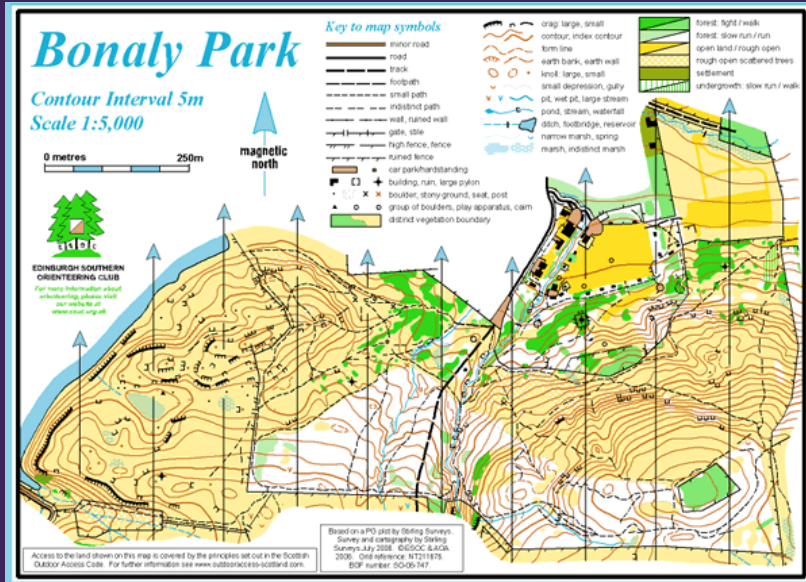


You can also
try some map
jigsaw games



Map Jigsaws

Print out a map and cut it up



Muddle up the pieces and remake

Turn it into a relay race

Have 1 map for each person/team

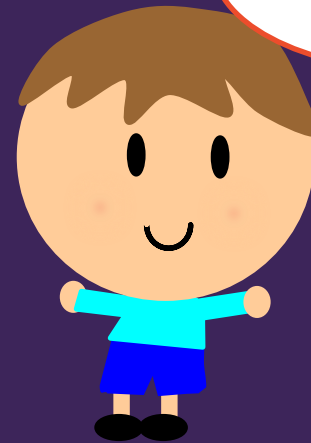
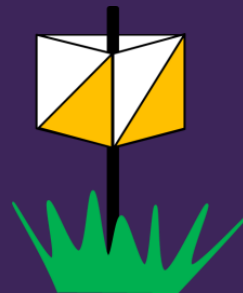
Activity 1: Try the Symbol Matching Game

Activity 2: Try some map jigsaws

Activity 3 : Draw a map using orienteering symbols



Have fun!



I'm off
orienteering!
Bye!