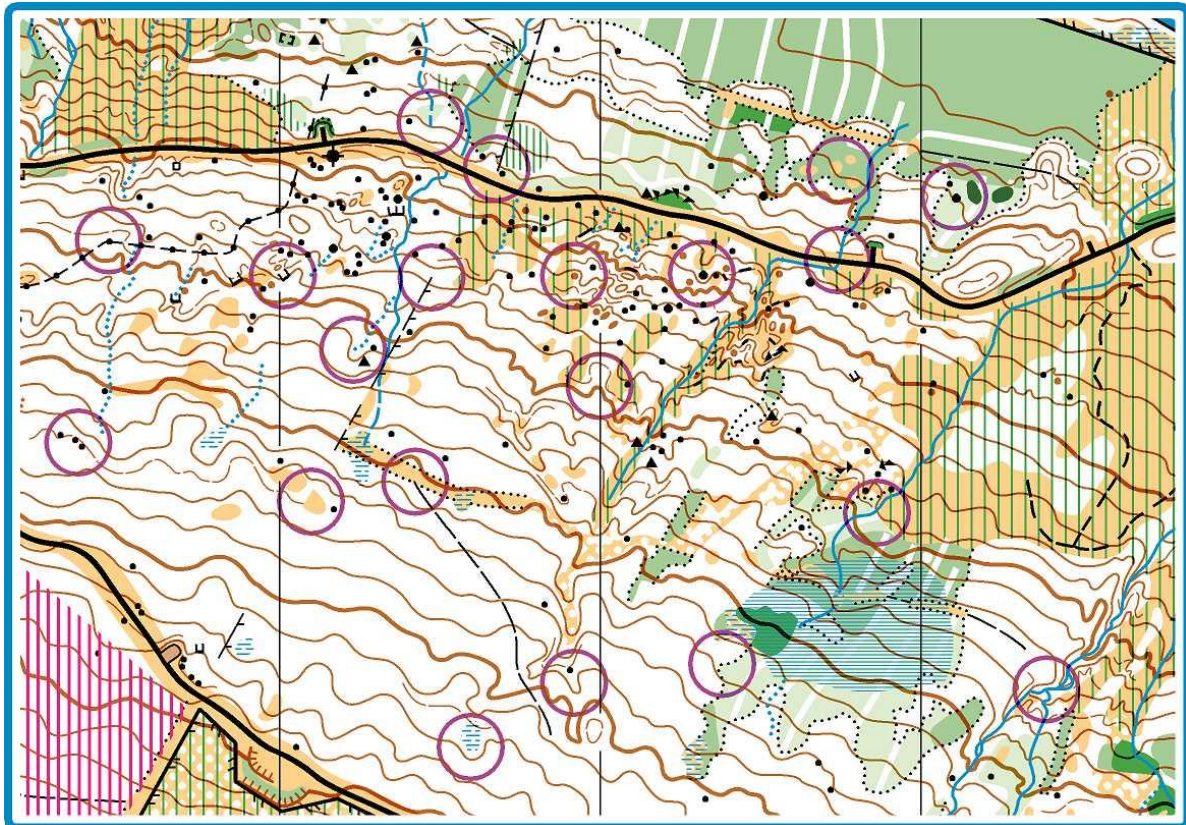


SOA Puzzle 36

Tour of Scotland - Errochty

Muddled Controls

The map is missing the control codes. Match the control codes in the table to the correct control circle on the map



Errochty Puzzle			
101			
102			
103			
104			
105			

106			
107			
108			
109			
110			
111			

112			
113			
114			
115			
116			
117			

118			
119			
120			



Errochty in north Perthshire is a runnable forest containing areas of natural deciduous woodland on complex terrain with a plethora of rock feature. The Scottish round of the Compass Sport Cup was held here just before the Lockdown began.

Thanks to STAG for the use of the map.

