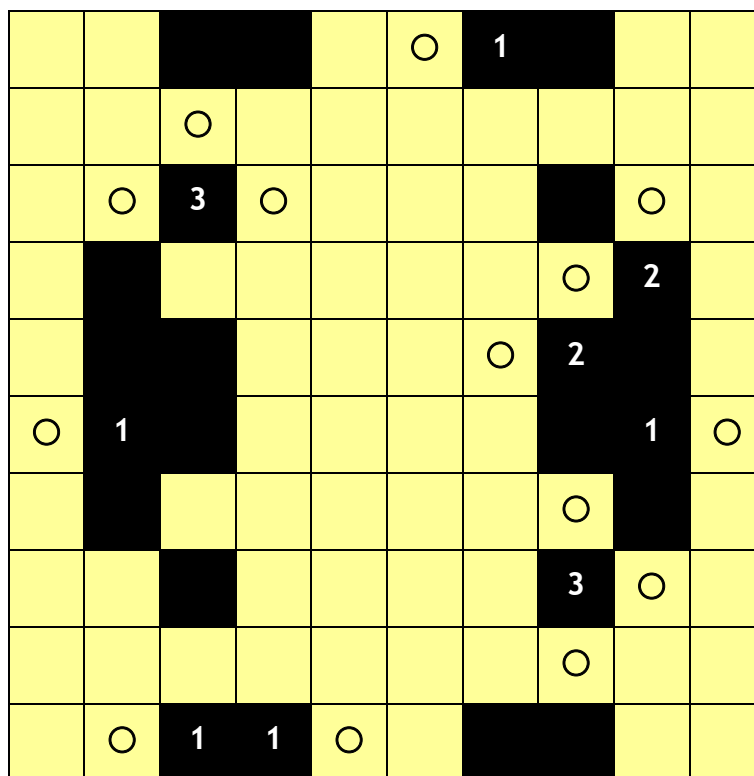


SOA Puzzle 24 - Solution

Night-O

A group of orienteers are going Night Orienteering; decide where they must be in the grid so that no-one's head torch can shine on anyone else and so that every white cell in the grid is lit. Head torches will light up every white cell in the row and column they are located in (both behind and in front of the orienteer) but cannot penetrate through the black cells. If a black cell has a number, this is the number of orienteers who are adjacent to that cell either horizontally or vertically.

Location of orienteers marked by circle ○



Thanks to the Atkinson family from ELO for the idea for this puzzle.